

MySQL for Windows

Tak Auyeung

September 7, 2003

1 Getting it

Go to <http://www.mysql.com> for general information. To make your life easier, you can get most of the files on a CD (so you can install it easily on another computer). I assume you have a CD with all the installation files. If you don't have one handy, I have an ISO image that you can use. Email <mailto:mobots@mobots.com> so I can point you to the whereabouts of this ISO image.

1.1 Installing the database server

Install MySQL (the database server) first. Double click on the “Setup” icon with the installer icon to start this process. Refer to figure 1 for a screen-shot.

Follow the prompt and accept defaults settings. At the end of this process, you should see the screen in figure 2.

At this point, you don't really know whether it works or not. You can use a command line prompt (otherwise known as a DOS box) to test the installation. Click the Start button, then select “run”, type `command` in the dialog box and click Okay.

In the DOS box, issue the following commands:

```
c:  
cd \mysql\bin  
mysqld --console
```

This should start the MySQL server the first time. It'll initialize many files, and end with a screen similar to figure 3.

At this point, the database server is already running! Don't stop it, it is normal that the DOS box appears to have “hung up”.

1.2 Installing the ODBC Driver

In order to let most other applications (including Microsoft Access) access your MySQL databases, you need to install the ODBC (Open DataBase Connection) driver. Double-click on the “MyODBC...” icon on the installation CD as displayed in figure 4.

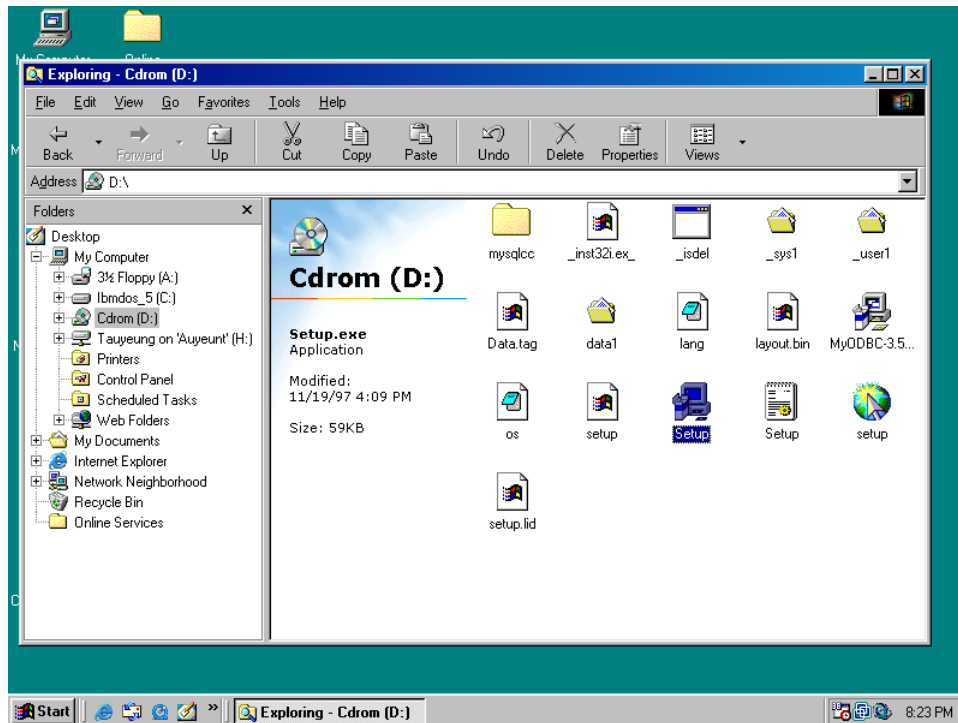


Figure 1: Install MySQL, double-click the Setup icon.

After the installation, you should see the screen as illustrated in figure 5.

1.3 Installing the MySQL Control Center

Although you technically have everything necessary at this point, it is best to install the Control Center as well. This is a GUI application that allows you to perform administrative functions without having to resort to SQL queries.

On the installation CD, go to the folder labeled “mysqlcc”, then click on the Setup item with the software installation icon as illustrated in figure 6.

Accept all the defaults and install the software. At the end of the installation process, you should see a screen similar to figure 7.

On your desktop, you should see a shortcut labeled “MySQL Control Center”. Double click to start it. If all is successful, you should see a screen similar to figure 8.

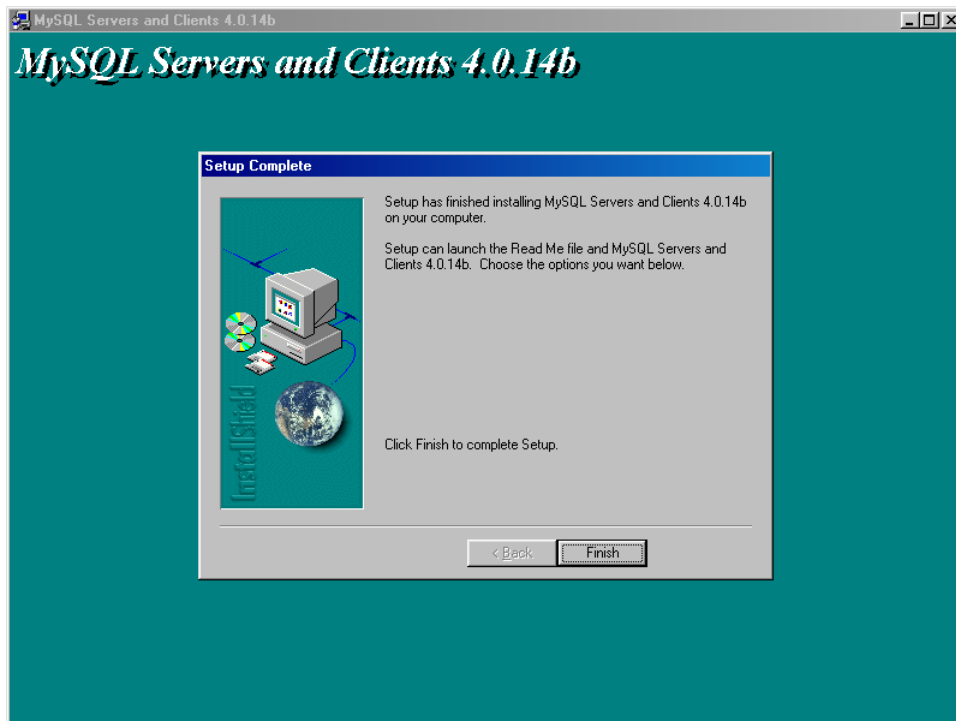


Figure 2: End of the installation of MySQL.

2 Admin. Stuff

2.1 Creating a new database using Control Center

Right click on "Databases" and select "New Database". Refer to figure 9 for reference. Give the database a name and click "Okay". Right click on the new database, then select "Connect" so the database icon turns green.

Once a database is connected, you can right click on "Tables" and select "New Table" to create a new table. The table creation screen should be fairly self explanatory.

2.2 Creating a new ODBC entry

Once a database is created, you can define an ODBC entry for it. To do this, click the "Start" button, then select "Settings" and "Control Panel" (refer to figure 10).

Then, double click on the item labeled "ODBC Data Sources (32bit)". You should see a screen similar to figure 11.

Press the "Add" button, then select "MySQL ODBC 3.51 Driver" from the driver list. Refer to figure 12 for more details.

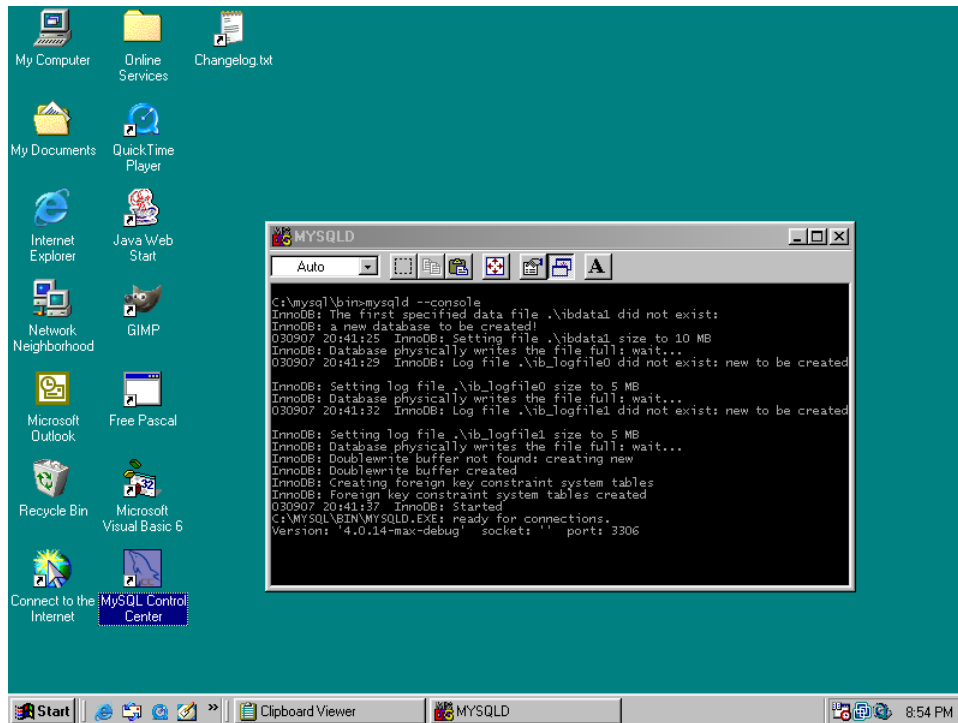


Figure 3: Screen after running `mysqld` the first time.

In the DSN configuration dialog box, you can use any name as “Data Source Name”, it is merely used to identify the data source. However, the “Database Name” must match the name of the database that you just created in Control Center. Do not specify any directory. Enter “root” as “User” and leave “Password” empty (unless you have already set up a password for root). Refer to figure 13 for a sample screen.

Click on the button labeled “Test Data Source”. If everything is done right, you should see a message saying “Data Source ‘My Own Test’ Connected Successfully to ‘mysqld-4.0.14-max-debug’!!!”. Of course, your message may differ depending on your version of MySQL and the name of the database.

Press Okay buttons to exit all the way out to Windows.

3 Using MySQL databases from Access

In Access, select “File” and then “Open”. Click on “Files of type” and select “ODBC Databases” (refer to figure 14 for more details). Then, in the “Select Data Source” dialog box, switch to the “Machine Data Source” tab. Select the database you wish to use and click OK. Refer to figure 15 for a sample screen.

If all goes well, you will see a dialog box displaying all the tables in the

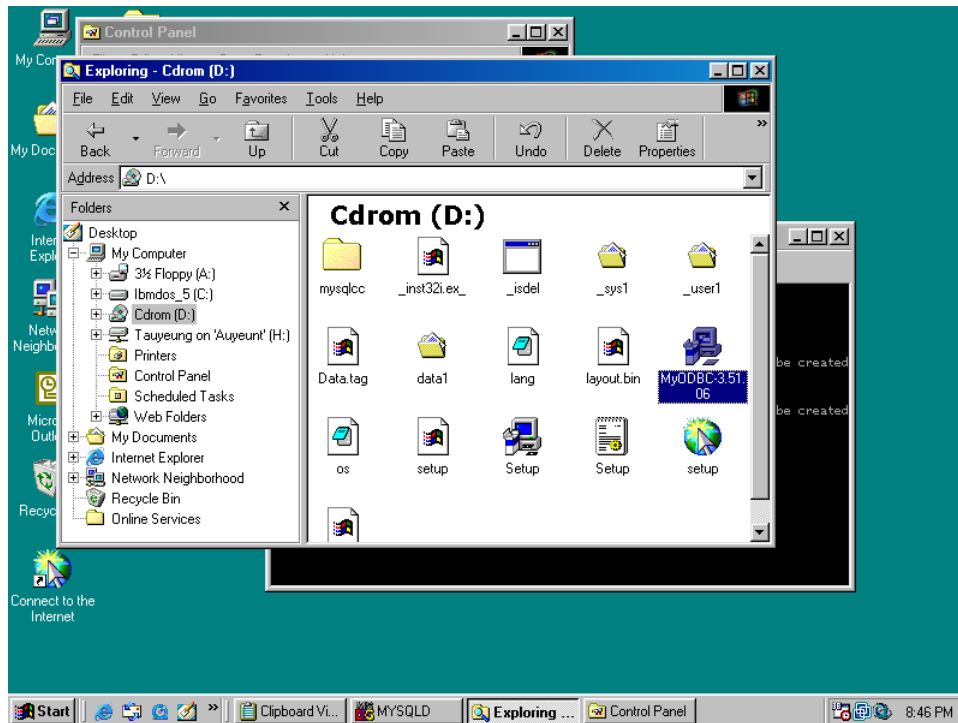


Figure 4: Start to install the ODBC driver for MySQL.

selected database. Select the ones you need, or simply click “Select All” to have everything selected. Then, click OK to continue. You may need to choose a field that is unique if a table has no primary key.

Once tables are added, you should see these “special” tables with a special “globe” icon in the table list like in figure 16.

For the *most* part, you can use an ODBC linked table as a normal table. However, the design of such a table cannot be modified in Access. Instead, use Control Center to alter the design of a table.

4 Starting and Stopping MySQL

Because the MySQL server is a special process, you should be careful about the starting up and shutting down of it.

The best way to shut it down is to click the Start button, select “Run” and just type the following:

```
c:\mysql\bin\mysqladmin shutdown
```

This will shutdown the server properly. It make take a little bit of time because there can be a lot of cached operations not written to the hard disk.

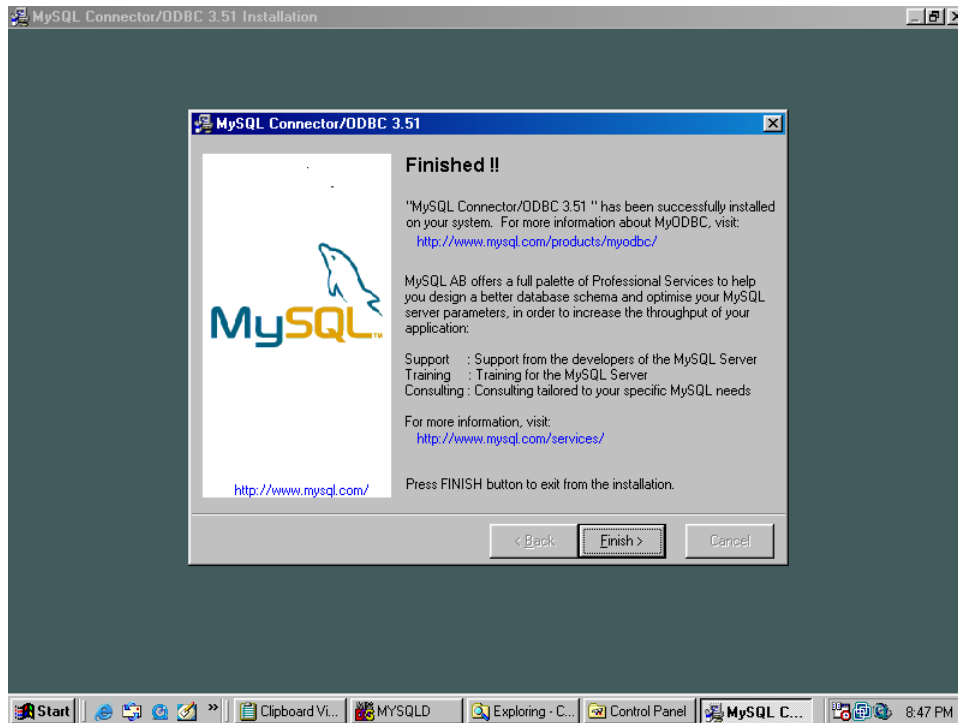


Figure 5: End of the installation of the ODBC driver for MySQL.

You can set up a shortcut to start up MySQL and another one to shut it down. The “Command line” for the start up shortcut should be

```
c:\mysql\bin\mysqld
```

The “Command line” for the shut down shortcut should be

```
c:\mysql\bin\mysqladmin shutdown
```

If you place the start up shortcut inside the “StartUp” folder (under Programs, under Start Menu), then MySQL starts up every time you log in. Unfortunately, there is no easy way to ensure a proper shutdown when you log out. It is best to start up and shut down MySQL manually, especially if you are the only user.

An alternative is to rely on `winmysqladmin` to start up and shutdown MySQL. You can use the “Start — Run” approach and type in `c:\mysql\bin\winmysqladmin`, or set up a shortcut to it. Shortly after `winmysqladmin` starts up, it becomes an icon in the systems icon area (that looks like a traffic light). You can right click on the icon, select your OS, then click on “ShutDown Both” to stop both the administrative tool *and* the server.

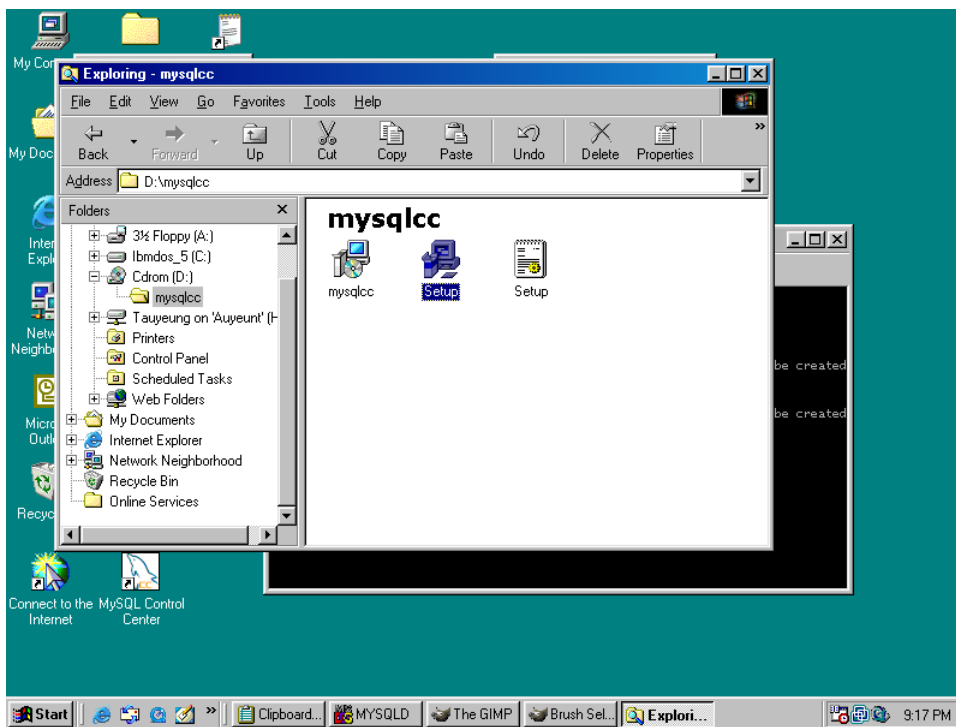


Figure 6: Install the Control Center.

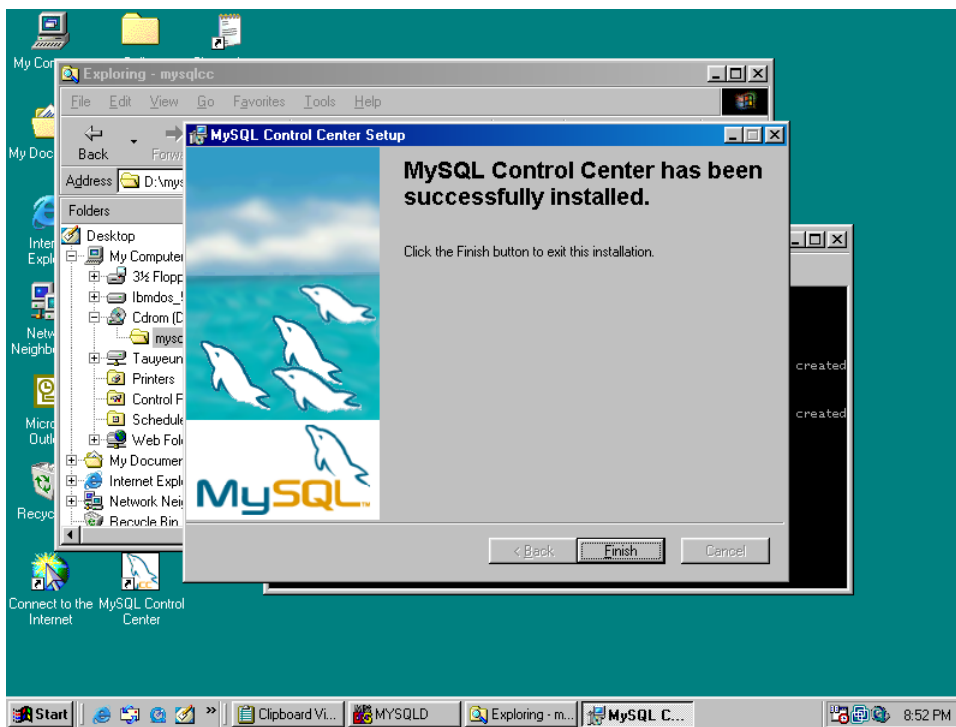


Figure 7: End of the Control Center installation.

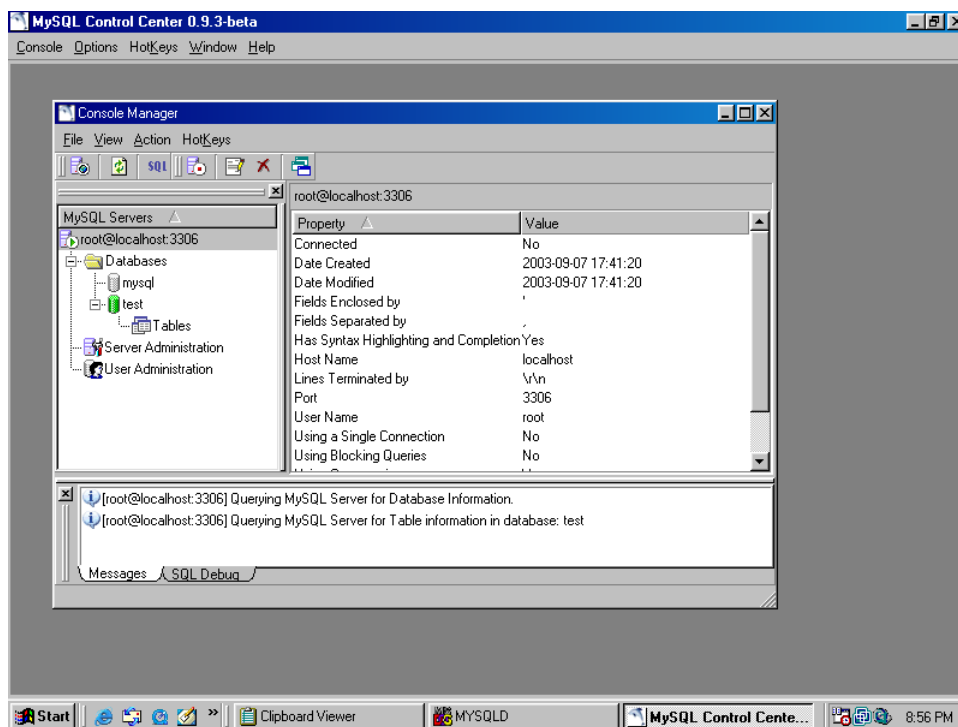


Figure 8: MySQL Control Center screen.

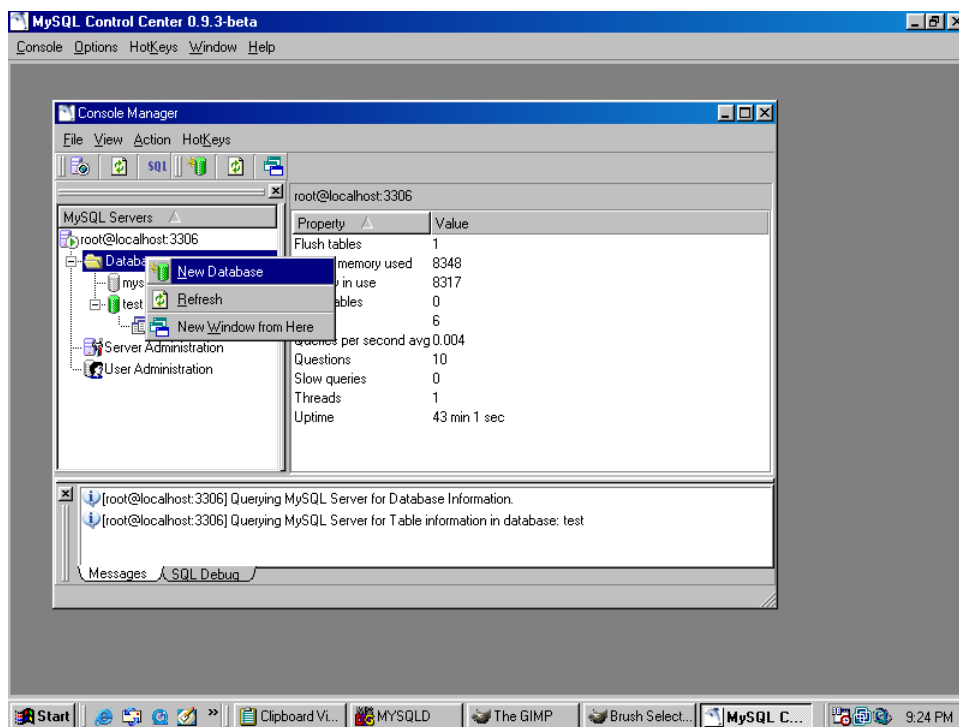


Figure 9: Creating a new database in Control Center.

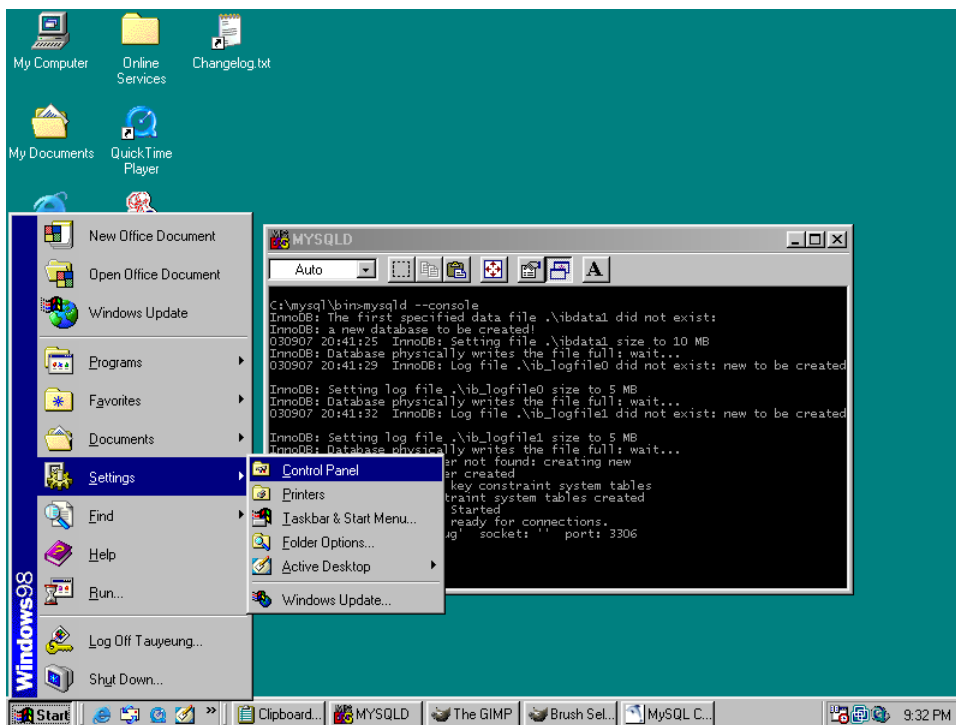


Figure 10: Starting Control Panel.

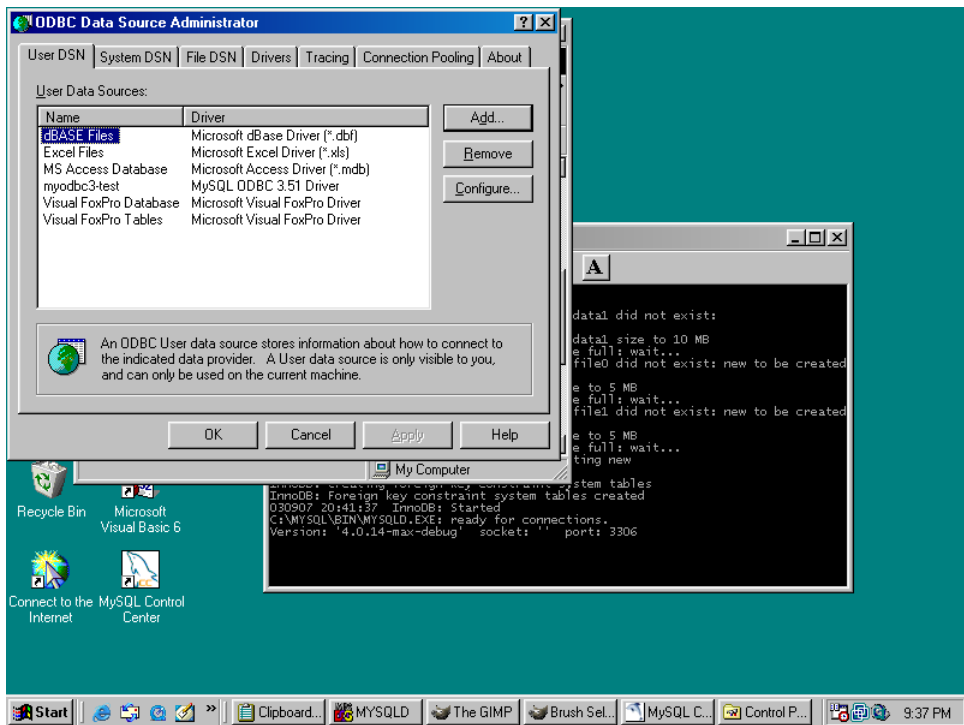


Figure 11: ODBC Data Sources Administrator screen.

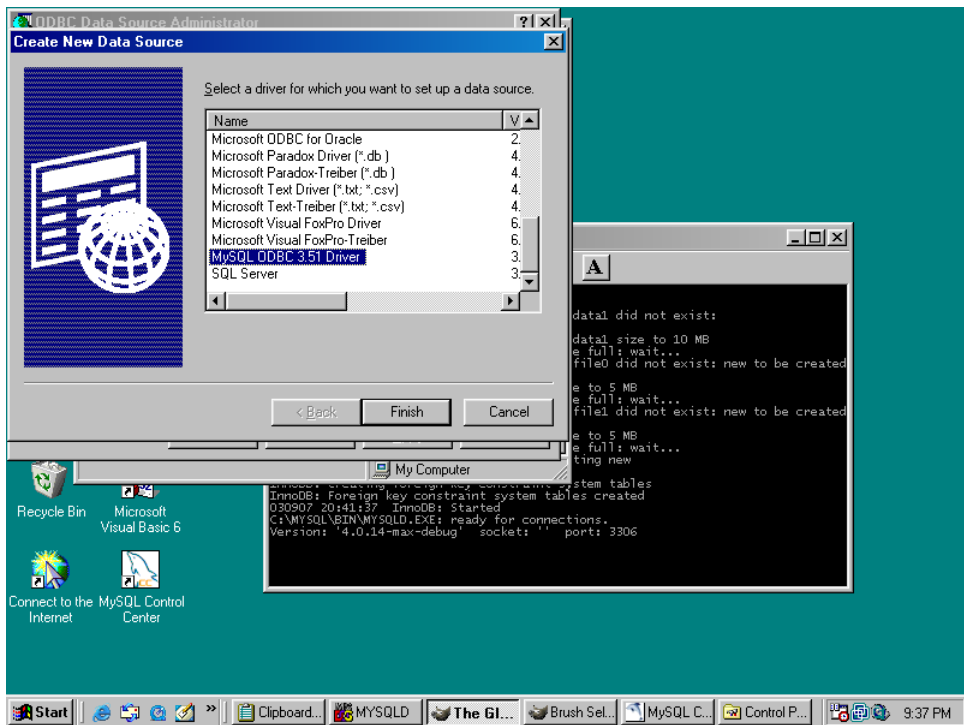


Figure 12: Choose MySQL ODBC driver.

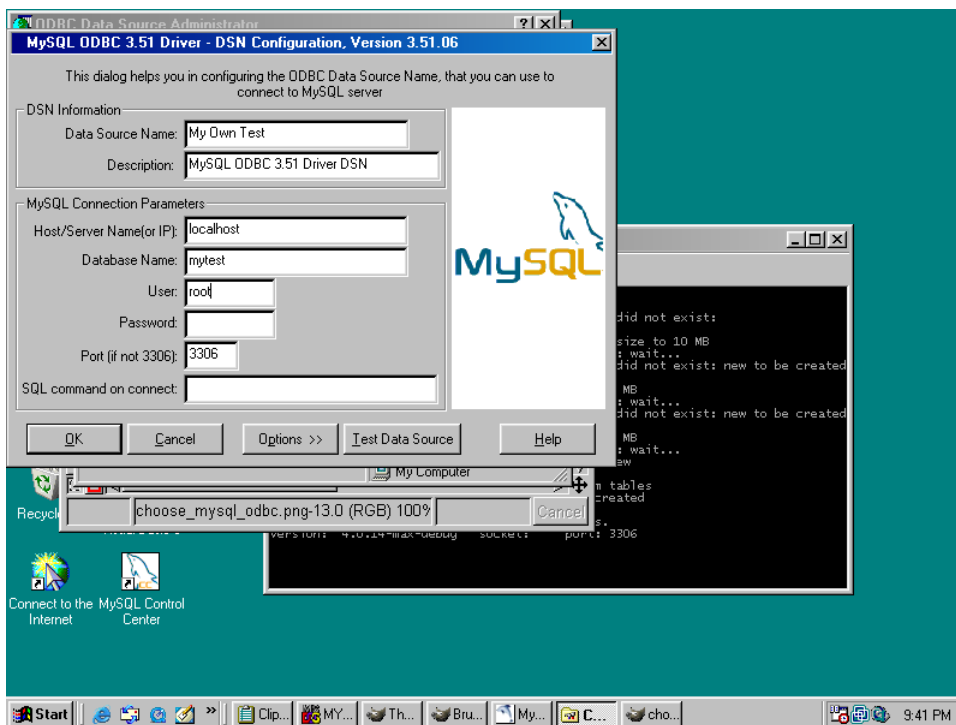


Figure 13: Dialog box to configure a new MySQL data source.

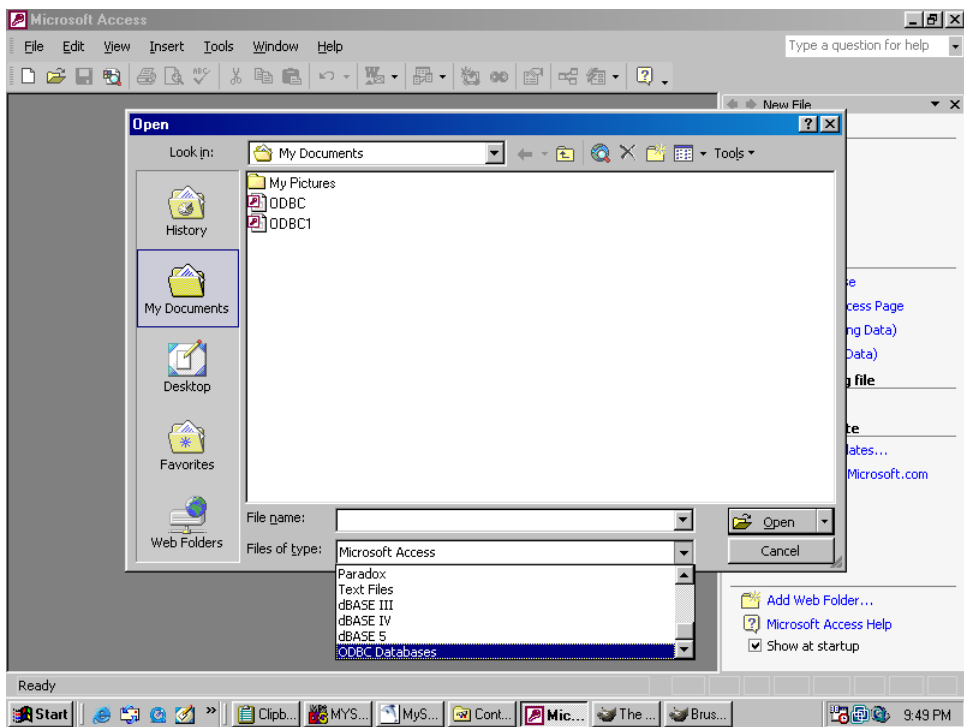


Figure 14: Choose ODBC Databases when opening a database in Access.

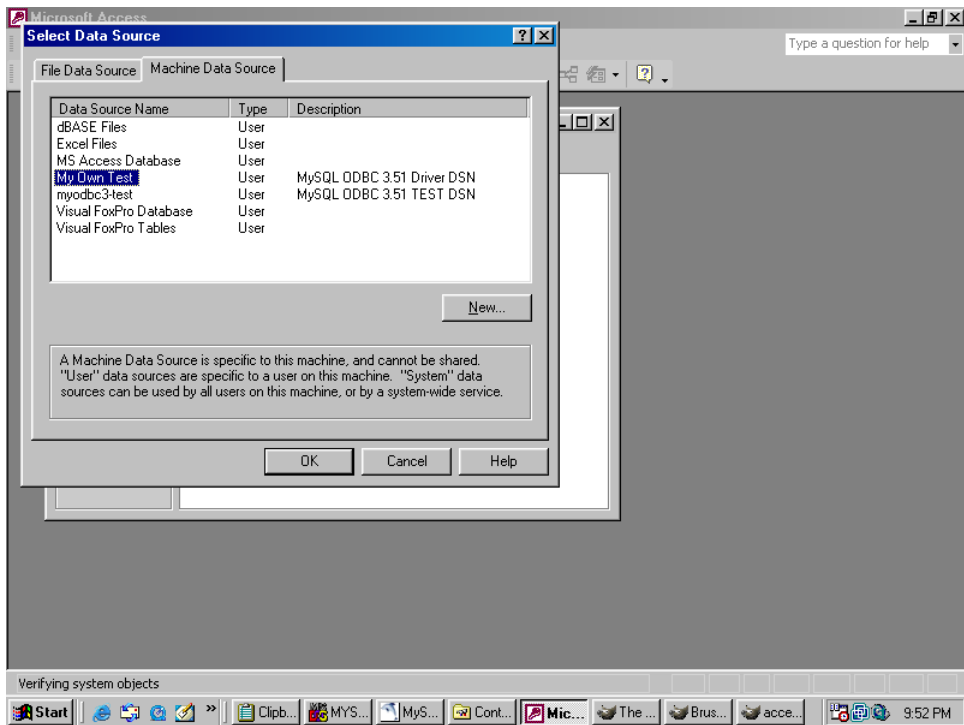


Figure 15: Select a data source from Machine Data Source.

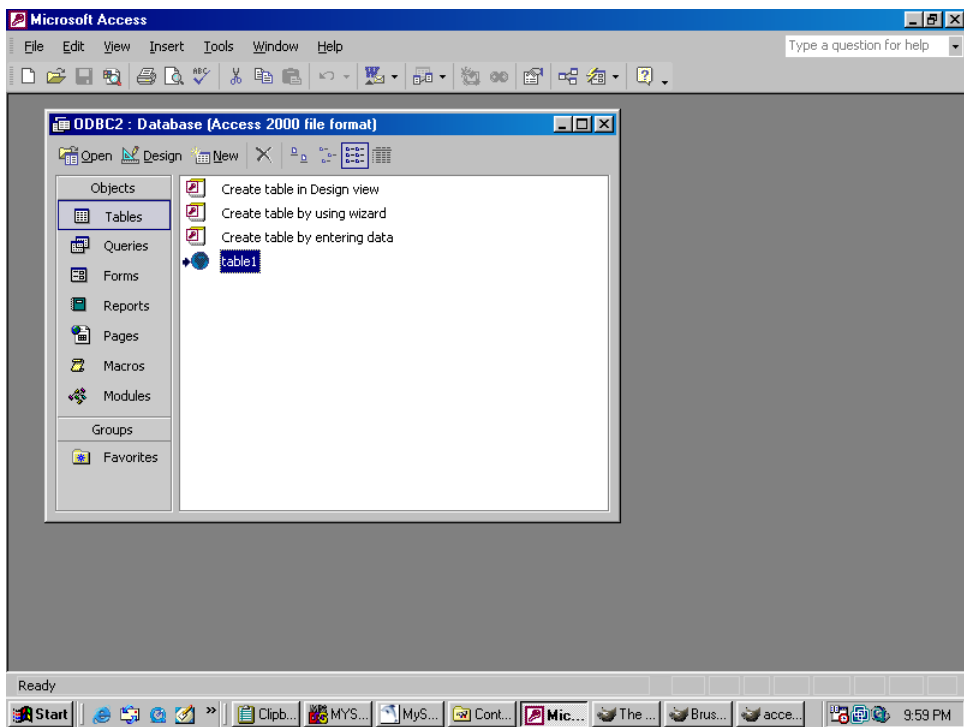


Figure 16: An ODBC linked table in the list of tables.